

Slatwall Merchandising Panels



The Industry's most versatile choice in Slatwall



MDF Slatwall

- ▶ Most finish options.
- ▶ Outstanding load capacity.
- ▶ Contains recycled/recovered wood content.
- ▶ Panel inserts increase weight capacity.
- ▶ CARB Phase II & EPA TSCA Title VI Compliant.

Weight Capacity - 🧑‍🦱🧑‍🦱🧑‍🦱

Price - \$\$\$

Particleboard Slatwall EQ

- ▶ Made with higher pine content to add strength.
- ▶ Load capacity equal to or better than MDF.
- ▶ 100% post industrial recycled/recovered content.
- ▶ CARB exempt & EPA TSCA Title VI Compliant.

Weight Capacity - 🧑‍🦱🧑‍🦱🧑‍🦱

Price - \$\$

Particleboard Slatwall LT

- ▶ Fiber orientation and large chip particulates provide strength.
- ▶ No fiber finish shows through.
- ▶ Lighter-duty, most economical.
- ▶ CARB Phase II & EPA TSCA Title VI Compliant.

Weight Capacity - 🧑‍🦱

Price - \$

marlite[®]
your world on a wall

20%
buttercream
vanilla
candles

Finishes

Digitally Printed Low Pressure Melamine (LPM)

Available on MDF Slatwall only



310-SKY
Sierra Maple



317-SKY
Alum Rock Maple



318-SKY
Windsor Anigre



319-SKY
Whittier Anigre



342-SKY
Champagne Maple



2041-SKY
Ashen Oak



2042-SKY
Smoky Birch



2045-SKY
Natural Swiss Oak



2046-SKY
Nebbia



2047-SKY
Sabbia



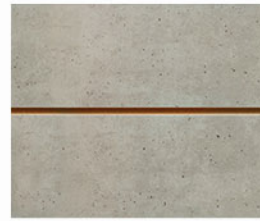
2048-SKY
Volcanna



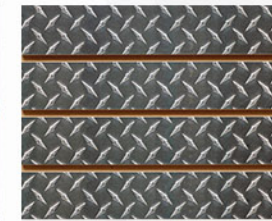
2049-SKY
Woodward Oak



2138-SKY
Slatwall Subway



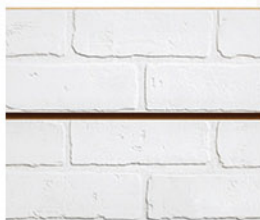
2409-SKY
Concrete Leaden



2456-SKY
Black Chrome
Diamond Plate



2653-SKY
Independence Dark



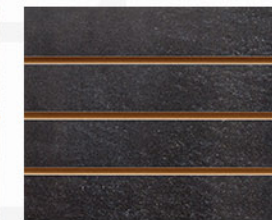
2654-SKY
Alabaster



2661-SKY
Pub Brick Light



2663-SKY
Slate Roof Grey



2666-SKY
Black Slate



2710-SKY
Aged Barnside



2718-SKY
Painted Planks



2719-SKY
Pallet Wood



2720-SKY
Patina White



2889-SKY
Tire Tread

Powered by:

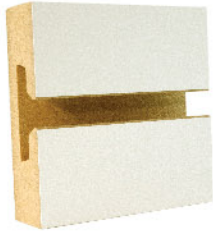


Take your brand to the next level by adding logo and images to Slatwall. Don't settle for a boring retail space when you can create an environment that wows.

View more BlueSky™ ideas at www.marlite.com!

Low Pressure Melamine

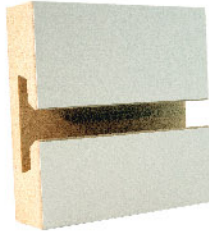
Available on MDF Slatwall, Slatwall EQ, & Slatwall LT



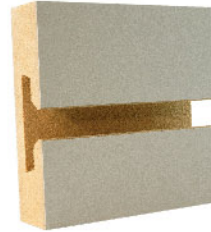
750 Goshen White



744 Swiss Almond



751 Stone Gray



742 Tornado Gray



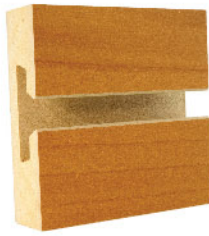
844 Trojan Black



687 Hard Maple



975 Cherry



874 Pearwood



692 Fine Oak



711 Linn Birch



5355 Knotted Pine



872 Mahogany



738 Brushed Aluminum

Specialty Finishes

Available on MDF Slatwall only



601 Clear Mirrored Acrylic



041 White Birch Veneer



020 Red Oak Veneer



001 Paint Grade

Available in:
MDF Slatwall
Slatwall EQ
Slatwall LT

Thermo-fused

Available on MDF Slatwall only



5357 Sandalwood



5363 Baroque



5362 Stromboli



5358 Pewter Pine

High Pressure Laminate

Available on MDF Slatwall only

Choose from **ANY** major brand.



Solid Color Painted

Available on MDF Slatwall only

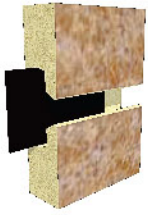


Choose from over 7,000 Sherwin-Williams paint colors using our online BlueSky™ tool at marlite.com.

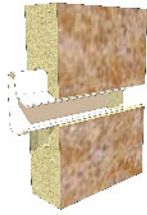
Powered by:



Inserts & Trim. The complete package.



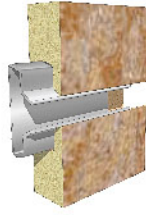
**Vinyl Trim Strips
2000 Series**
•Light Duty
•Field Installed
Available in:
White, Black



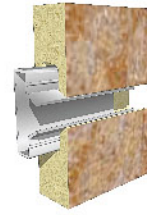
**Vinyl Color Snaps™
2000 Series**
•Light Duty
•Field Installed
Available in:
White, Black, Red,
Ivory, Platinum



**Aluminum Inserts
2000 Series**
•Medium Duty
•Field Installed
•Mill Finish
•For use with
metal accessories
only.



**Vinyl Inserts
5000 Series**
•Light Duty
•Factory Installed
Available in:
White, Black



**Aluminum Inserts
7000 Series**
•Medium Duty
•Factory Installed
•For use with a
variety of accessories.
Available in:
Mill Finish, Black.



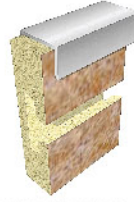
**Aluminum Inserts
1000 Series**
• Light Duty
•Factory or Field
Installed
•Mill Finish
•For holding glass or
acrylic shelving.



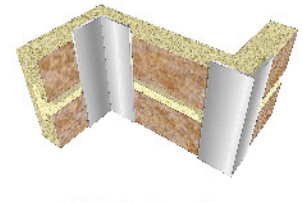
A770 Aluminum Edge
• 1/2" x 1 3/16" x 96"
• Mill Finish



W770 Wood Edge
• 9/16" x 1" x 96"
• Poplar
• Field Finished



V67 PVC Edge
• 3/8" x 1 3/16" x 96"
• Available in:
White, Black, & Grey



**A760 Aluminum
Inside/Outside Corner**
• 1" x 1" x 96"
• Mill Finish

Installation. It really is that simple.



Slatwall panels are applied using drywall screws fastened to studs through the groove.



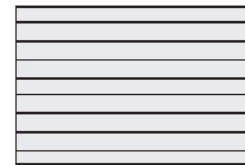
Sizes & Configurations. What makes our panels so versatile.

Horizontal Panel Format:

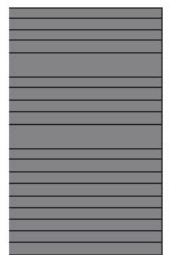
4'x8'x3/4", 3" on center Grooves.
Long edges have half groove to facilitate concealed joints and vertical stacking.
Short edges (48") are square cut.

Vertical Panel Format:

8'x4'x3/4", 3" on center Grooves.
All edges are square cut.



4' x 8'



8' x 4'



LIT-SW-202001
effective date: 09/01/20
copyright 2020

Follow us on:



www.marlite.com
(800) 377-1221